

## Driving elements

We make the world go around

accessories

Spindelfabrik Neudorf



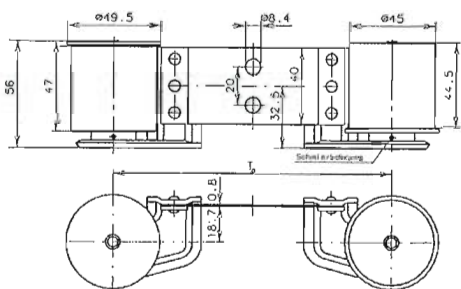
### Tangential belt pulley attachments for tangential belt drivers

Our driving elements ensure:

Optimum dynamics, low noise emission,  
greatly reduced wear of the tangential belt  
thanks to the use of steel pressure rollers,  
Belt running speeds up to 34.5 m/sec.

Depending on the machine in question,  
pressing forces between 5 and 20 N can be set.

TR 45.2		
Order-Nr.	Spindle gauge	To
7600 6904	70	138
7600 6905	75	147
7600 6906	82.5	162
7600 6907	90	176

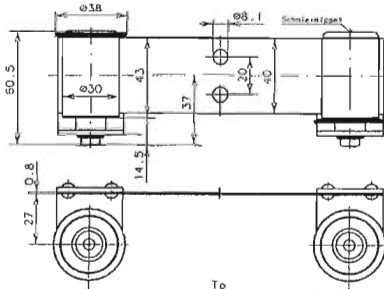


### Belt tension rollers for four-spindle drivers

The belt tension rollers are available in various sizes.

They can be used: As wear-resistant rollers for  
speeds of up to 8000 rpm, robust bearings,  
not just suited for use in spinning and twisting  
machines, but also in general machine  
building for the guiding, deflection and  
tensioning of belts and tapes.

TR 30.4		
Order-Nr.	Spindle gauge	To
7600 7078	70	138
7600 7079	75	147
7600 7080	82.5	160
7600 7081	90	174



### Roller axes

Roller axes are available in various modifiable  
versions.



### Spindelfabrik Neudorf GmbH

Karlsbader Straße 226  
D-09465 Sehmatal-Neudorf  
Germany

Phone: +49 (0) 37342 / 13-0  
Fax: +49 (0) 37342 / 13-185  
e-mail: sales.sfn@t-online.de  
spindelfabrik.neudorf@t-online.de  
Internet: www.sfn-gmbh.de



Spindelfabrik Neudorf